

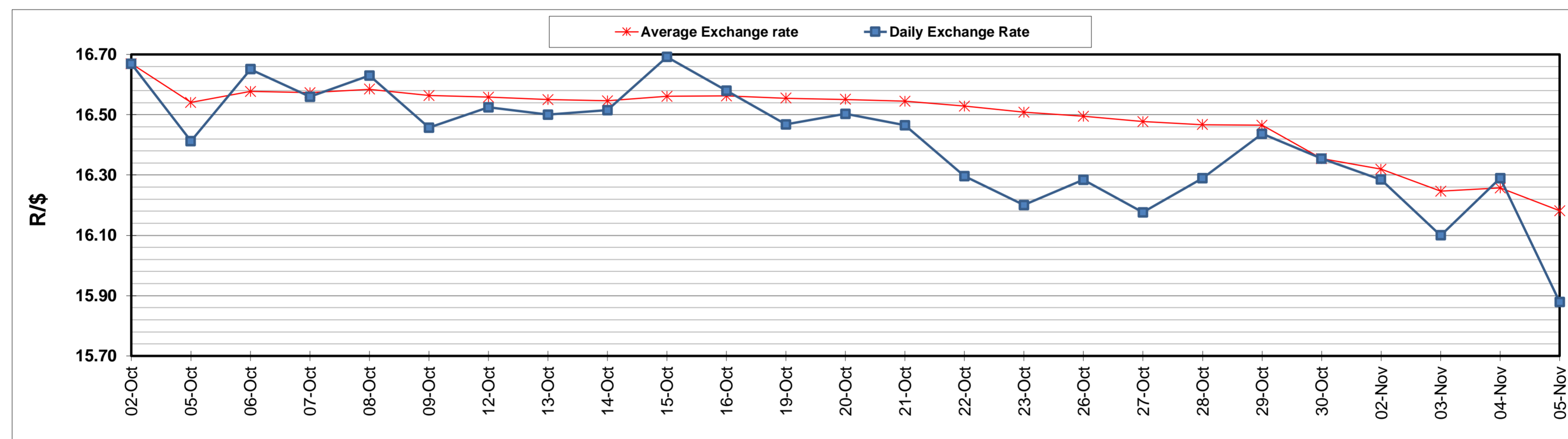
	PETROL 95 ULP	PETROL 93 ULP & LRP	DIESEL 0.05%	DIESEL 0.005%	ILL. PAR.
GAUTENG PUMP PRICE (SA c/l) AS FROM 04/11/2020	1,459.000	1,439.000	-	-	-
WHOLESALE PRICE (SA c/l) AS FROM 04/11/2020	-	-	1,225.560	1,227.960	655.828
SINGLE NATIONAL MAXIMUM RETAIL PRICE	-	-	-	-	818.000
BASIC FUEL PRICE - 05/11/2020 (SA c/l)	475.204	467.185	468.479	471.567	455.635
PRESS RELEASE CONTRIBUTION TO BFP 04/11/2020 - 05/11/2020 (SA c/l)	506.470	496.470	474.630	477.030	451.128
UNIT OVER/(UNDER) RECOVERY - 05/11/2020 (SA c/l)	31.266	29.285	6.151	5.463	(4.507)
AVERAGE BASIC FUEL PRICE 30/10/2020 - 05/11/2020	466.744	459.533	458.490	462.190	441.604
AVERAGE UNIT OVER/(UNDER) RECOVERY 30/10/2020 - 05/11/2020	55.926	53.137	23.340	21.440	0.524

ANALYSIS MOVEMENT OF AVERAGE OVER/(UNDER) RECOVERY

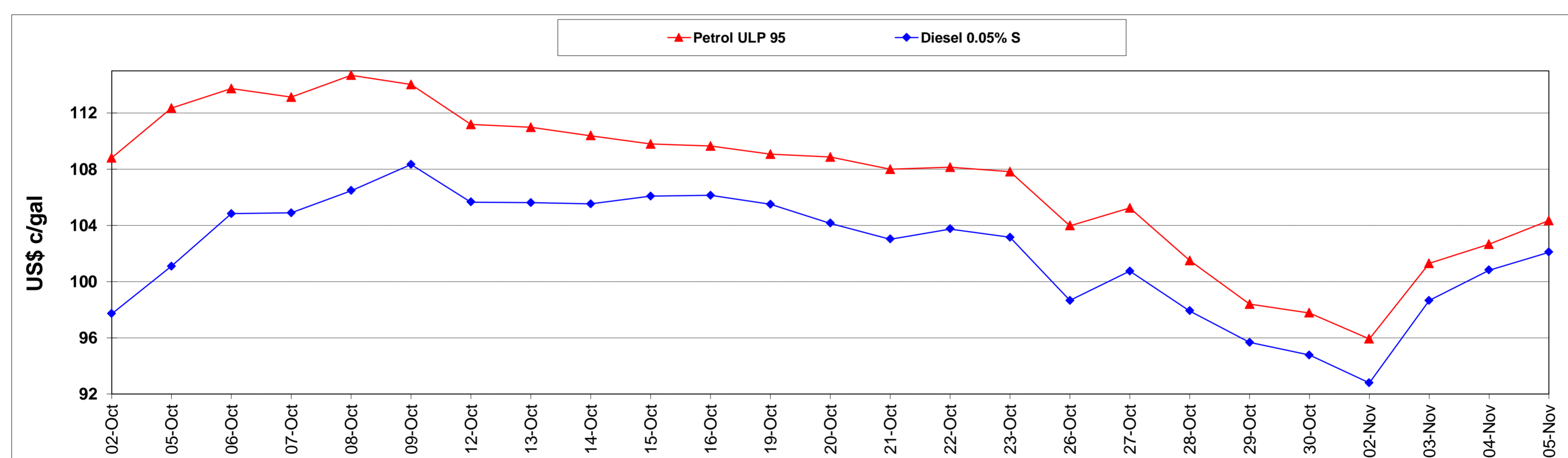
	PETROL 95	PETROL 93	DIESEL 0.05%	DIESEL 0.005%	ILL. PAR.
- MOVEMENT IN INTERNATIONAL PRODUCT PRICES	47.734	45.072	15.293	13.328	(7.226)
- MOVEMENT IN EXCHANGE RATE	8.192	8.065	8.047	8.112	7.750
AVERAGE UNIT OVER/(UNDER) RECOVERY 30/10/2020 - 05/11/2020	55.926	53.137	23.340	21.440	0.524

R/\$ EXCHANGE RATE - (R/\$15.8793 - 05/11/2020)

EXCHANGE RATE USED IN BASIC FUEL PRICE



INTERNATIONAL PRODUCT PRICES OF BASKET USED IN BASIC FUEL PRICE



BASIC FUEL PRICE IN SA CENTS PER LITRE

